

eHealthConnecticut: Regional Extension Center Overview



Connecting Connecticut Through Health Information Technology

Regional Extension Center



Awardee of The Office of the National Coordinator for Health Information Technology



Connecting Connecticut Through Health Information Technology

Regional Extension Center

eHealthConnecticut REC Overview

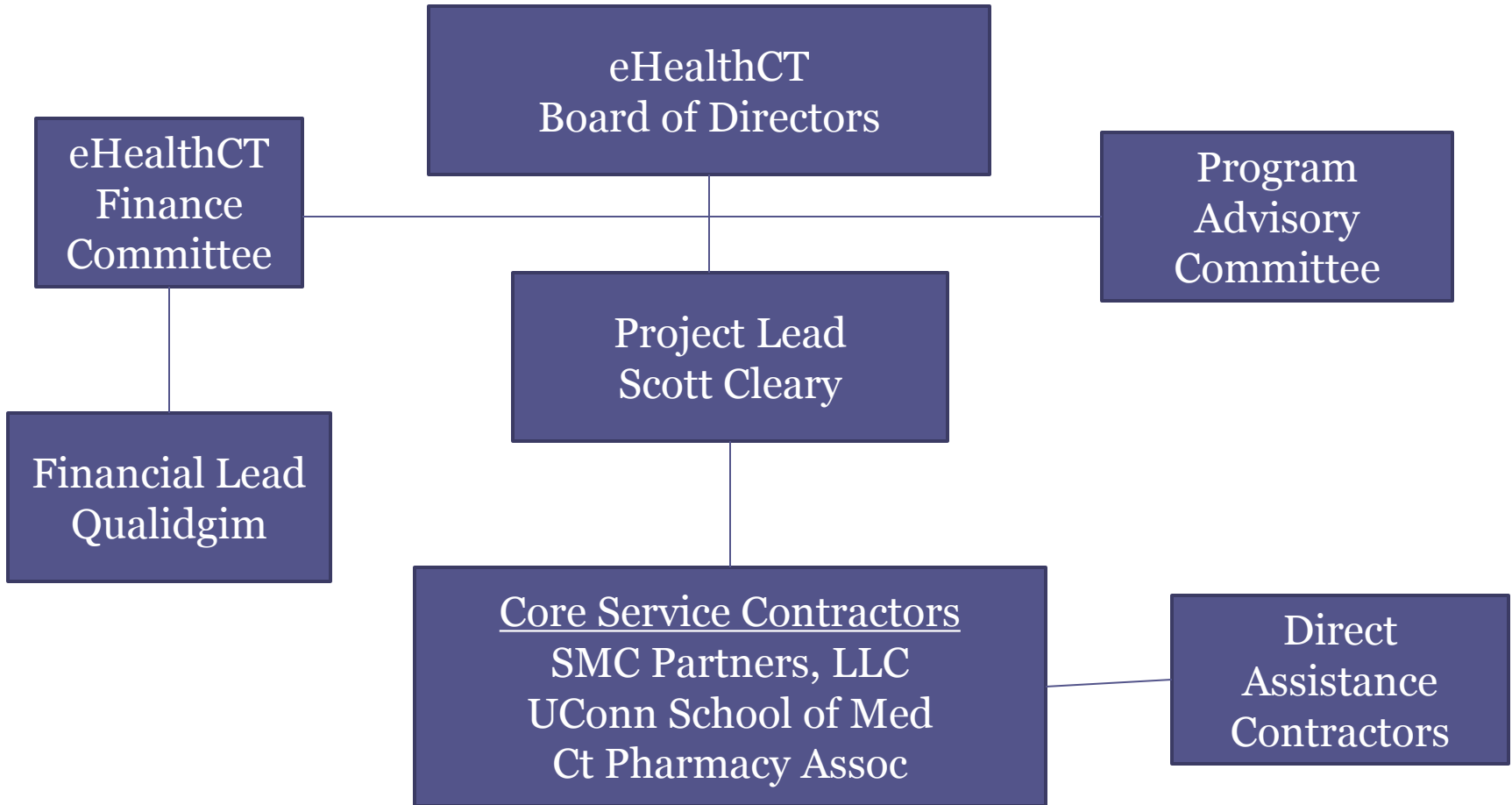
- \$5.75 million awarded to eHealthConnecticut on 4/6/2010. Expanded to \$6.4 March 2011.
- Goal: To bring 1308 Priority Primary Care Providers to Meaningful Use
- 4 year “Cooperative Agreement” with Office of the National Coordinator (ONC), Department of Health and Human Services, grant number 90RC0053
- Federal grant offers 9:1 match years
- 62 REC’s; only one REC for any geography; eHealthConnecticut is statewide



Connecting Connecticut Through Health Information Technology

Regional Extension Center

eHealthConnecticut REC Structure





Connecting Connecticut Through Health Information Technology

Regional Extension Center

Collaborators



- CMS/ONC
- CT Department of Social Services
- CT DPH and HITE-CT
- Capital Community College- Workforce Training



Connecting Connecticut Through Health Information Technology

Regional Extension Center

Who We Serve: Priority Primary Care Providers

- Includes:
 - Licensed Doctor of Medicine (MD),
 - Doctor of Osteopathic Medicine (DO),
 - Nurse practitioner (NP),
 - Physician Assistant (PA) with prescriptive privileges
- Who:
 - Provides primary care services in the areas of Family Practice, Internal Medicine, Obstetrics and Gynecology, and Pediatrics.
- Currently 685 Providers enrolled in Program



Connecting Connecticut Through Health Information Technology

Regional Extension Center

Who We Serve: Settings

- To be eligible for these federally subsidized services practices must be either:
 - Individual or small group practices primarily focused on primary care. Small group practices are defined as having 10 or fewer providers with prescriptive privileges in the practice.
 - Public and Critical Access Hospitals
 - Community Health Centers and Rural Health Clinics
 - Other settings that predominantly serve the uninsured, underinsured, and medically underserved populations.



Connecting Connecticut Through Health Information Technology

Regional Extension Center

Channel Partners

- Stakeholder Organizations Which Refer Customers. Include:
 - CSMS
 - Statewide and Local IPAs and PHOs
 - Community Health Centers/FQHCs
 - Hospital and Hospital Systems



Connecting Connecticut Through Health Information Technology

Regional Extension Center

Direct Assistance Contractors

- Boots on the Ground Technical Assistance

Organizations	
Arcadia Solutions	CHCACT
Community Health Center, Inc	Hartford Healthcare Corporation
Integrated Health Care	Medical Practice Partners, LLC
Medical Professional Services	Meriden Wallingford IPA
Plexeon Health IT Solutions	ProHealth Physicians
Qualidigm	Saint Francis HealthCare Partners
Yale-New Haven Health System	



Connecting Connecticut Through Health Information Technology

Regional Extension Center

EHR Vendor Strategy

- Vendor Neutral
- RFI last summer
- Minimum Criteria:
 - ONC MU Certified
 - CT HIE Compliant
- Information Posted on Website





Connecting Connecticut Through Health Information Technology

Regional Extension Center

Easy Provider Interface



The screenshot shows the website's header with navigation links: HOME, CONTACT US, ABOUT US, and a search box. Below the header are three tabs: Regional Extension Center (selected), Health Information Exchange, and Quality Improvement. Further down are links for EHCT REGISTRATION and LOGIN.

The main content area features a banner with a photo of four healthcare professionals and the text: **eHealthConnecticut Regional Extension Center**. Below this is a video player showing Scott Cleary, Program Director, with a caption: **Scott Cleary, Program Director** (eHealthConnecticut, LLC). The video player includes play, volume, and share controls.

Below the banner is a text block: **Welcome to Connecticut's Federally Funded Program to assist eligible providers to select, implement, and achieve meaningful use of Electronic Health Records and earn EHR incentive payments. [Click here to get started.](#)**

At the bottom of the banner is a subscription form: **Join Our Email List** with an email input field, a **Join** button, and a **Privacy by SafeSubscribe™** checkbox.

The page is divided into three columns:

- News & Information:**
 - Health Information Technology Exchange of Connecticut (HITE-CT)
 - CT Hospitals Early Adopters of Health IT
- REC Training & Education:**

The REC is developing training and education materials to help Connecticut providers with adoption and meaningful use of electronic health records. Please follow the link below and complete our short survey in order to assist us with developing educational offerings that are responsive to your needs.

Needs Assessment: Survey for Physicians
- Featured Links:**
 -  CMS Web Site for the Medicare and Medicaid EHR Incentive Programs
 -  YouTube: CMS Medicare and Medicaid EHR Incentive Instructions
 - 



Connecting Connecticut Through Health Information Technology

Regional Extension Center

Provider Responsibility

Scope of Work	Choose One	Payment 1: Contract	Payment 2: Live with EHR	Payment 3: Achieved Meaningful Use	Total
EHR Selection, Implementation, and Meaningful Use Achievement:		\$250	\$250	\$250	\$750
EHR Implementation and Meaningful Use Achievement:		\$200	\$200	\$200	\$600
Meaningful Use Achievement:		\$150	\$150	\$150	\$450



Connecting Connecticut Through Health Information Technology

Regional Extension Center

Provider Receives

\$2,000-\$5,500 worth of technical assistance per provider (depending on scope, practice size) and these work products, tailored to your practice:

- Readiness Assessment
- Work Plan
- EHR Selection Criteria and Options Analysis
- Implementation and Training Plan
- As-Is and To-Be Workflows
- IT Infrastructure Requirements
- Conversion Plan
- Meaningful Use Gap Analysis
- Meaningful Use Roadmap for Each Requirement
- Workflow and Systems Solution Description for Each Requirement



Connecting Connecticut Through Health Information Technology

Regional Extension Center

Education

- Developed by UConn Health Center and CT Pharmacy Association
- Modules to cover all aspects of REC services and Road to Meaningful Use
- On-Line and in Person Sessions
- CME credits available



Connecting Connecticut Through Health Information Technology

Regional Extension Center

How to Get Started

1. Register on eHealthConnecticut secure website
www.ehealthconnecticut.org
2. Complete online contract
3. Choose a Direct Assistance Contractor (or ask eHCT to assign one)
4. Complete online Readiness Assessment (or have your DAC do it for you)
5. Select and implement your EHR system, get to Meaningful Use, enjoy provider and patient benefits*

* And collect incentive payments if you qualify